



**WE ARE
YOUR BEST
CHOICE**

FLOMEK SINGAPORE PRIVATE LIMITED



Head office :66 Tannery Ln, #01-05G
Sindo Industrial Building, Singapore 347805

Factory: 9 Yishun industrial street 1, #04-64,
Singapore 768163.

CONTACT US FOR MORE INFORMATION

Call us : +65 9188 2150 | Mail : Sales@flomek.com | Web : www.flomek.com

ABOUT US

FLOMEK SINGAPORE PRIVATE LIMITED is owned and operated by competent pumps and blowers, water treatment technocrats, and engineering professionals to apply advanced technology in the design, construction, and commissioning of industrial processing pumps and blowers, water and waste water plants, skid packages.

Our Consulting is an Engineering support and services engineering company that provides a strategic, flexible, experienced and innovative approach to delivering engineering and management consultancy services for its clients.

Flomek Design, Develop & Install Pumps blowers Water and Waste water purification piping & Filter system. We undertake turnkey Renovation, Rectification & Up gradation of Water & Waste water treatment Systems to obtain its optimum efficiency.

As a Singaporean firm, we adhere to the highest safety standards in all of our processes and operations, including R&D and Quality Control. Flomek modern plant Erection Company based in Singapore and involved in Pumps and blowers and engineering activities injection skid works Pilot plants ,Turnkey projects. There are many reasons why should talk to us.

THE VOLUME OF EXPERTISE, EXPERIENCE AND INNOVATION

Our engineering knowledge in this area goes back to the beginning. A technocratic background coupled with decades of experience makes for a dazzling combination. All of this is brought to perfection through heavy investment and commitment to acquiring cutting-edge knowledge in research and development.

THE HIGH WATER MARK IN SERVICE

We go beyond our way to try to preserve our high standards. Our Technical Service Representatives are located around the country, supported by dedicated field employees and corporate task forces, to provide exceptional service right at your door.

WE FILL ALL NICHES IN THE FIELD

Over the years, we've evolved into a full-fledged Pumps and blowers and engineering solutions provider. We now have the technological expertise, product range, and service depth to meet the most diverse needs of customer base. We offer design, fabrication, performance evaluation, construction, installation, retrofitting, operation & maintenance, economic evaluation, and project management services for all sorts of water and wastewater cleansing pumping and piping support.

YOUR MONEY DOESN'T FLOW LIKE WATER

We specialize in delivering advanced technology and technical support at the most reasonable rates.

THE CONSEQUENCES ARE CLEAR

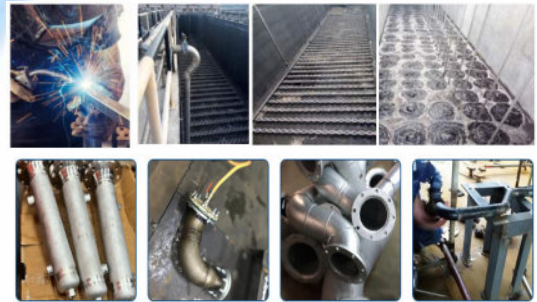
We have more than doubled our market share in the last decade as a result of all of the factors mentioned above. So, when you're with us, you can rest assured that you'll be in good company.

PUMPS AND BLOWERS



All kind of pumps and Blowers erection and commissioning/We support chemical non chemical field | Oil and gas | Mining | Dosing | Power Plants | Marine | Water and waste water plants | crushers | Food and Beverage | paper and pulp industries | domestic | Cold or hot fluid | solid or semi solid | Material's selection support and advise ,Etc.....

PIPING AND FABRICATION



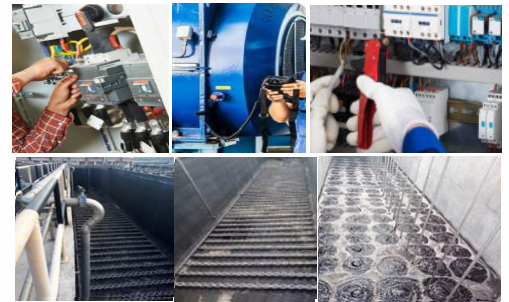
UPVC | CPVC | PVC | SS | HDPE | MS | GI materials. Welding as per ASME standards | Welding inspection for piping and supports Dimensional inspection | Base plate and frame fabrication | Skid works Etc...

SKIDS & PROCESS PLANTS



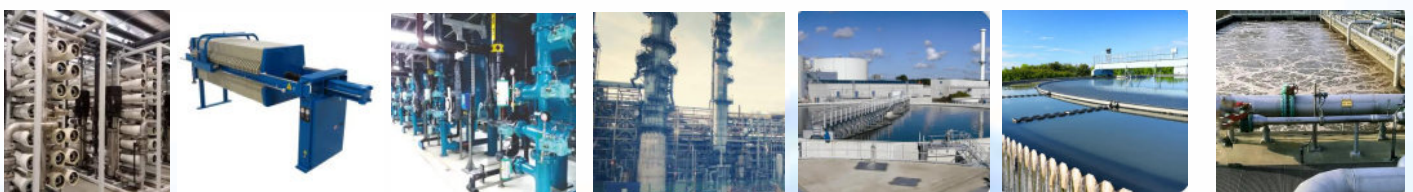
RO (Reverse osmosis) | Pump skids | Turnkey & EPC projects | Chlorine skids | Water & Sea Water | PLC & Integration | Pilot plant | Effluent Treatment Plants | Mixer And OWC Skids | Filters & Filter Packages | DAF & Clarifier | Chemical Dosing & injection

INSTALLATION AND COMMISSIONING



Erection and commissioning of projects Include welding | Piping | Measuring | Test running | Assembling Inspection reports | Technical advice | Overall plant support for WTP, STP , ETP, Softener, UF, RO | Chemical plant | Refinery | Filter press and maintenance Etc.,

O&M AND AMC



Annual maintenance | Operation maintenance | Overall maintenance and tracking | Plant testing and troubleshooting | Inspection reports | Technical advice | Overall plant support for WTP, STP , ETP, Softener, UF, RO, Chemical plant, Refinery | Filter press and maintenance

VALVES AND FITTINGS



UPVC | PVC | SS | HDPE | MS All types of fittings/Schedules based on the standard | Classes | Materia's | Grades | Mechanical and electrical support | Pneumatic actuators

PUMP SERVICE & OVERHAUL AND PAINTING WORKS



Casing/ Impeller/ shaft rework | Dynamic balancing | Shaft alignment | Bearing, seal and accessories replacement | Hydro testing | Performance testing | Painting as per client specifications | Oil replacement etc. | Painting as per client requirements | Blasting | Powder coating | Epoxy painting | Chemical resistant painting | Ceramic coating

SPARES AND ACCESSORIES



UPVC | PVC | SS | HDPE | MS All types of fittings/Schedules based on the standard | Standards | Classes | Materia's | Grades | Mechanical and electrical support | Pneumatic actuators

INSTRUMENTS



Flowmeter | Sensors | Analyser and Controller | Valves & Fittings | Hoses & Fittings

CUSTOMER SUPPORT AND SERVICES

- ★ Best Pumps and engineering solution partner
- ★ 24*7 Service support
- ★ We Assist for customer scope of work & Technical Advise
- ★ Lead Issue Tracking and recommend right solution
- ★ Optimize long time issue
- ★ Product Quality and document support
- ★ Recommend product improvements
- ★ Project process and progress based on the scope of customer and standards
- ★ Reliable product and projects
- ★ Responding promptly to customer inquiries.
- ★ Acknowledging and resolving customer complaints.
- ★ We Ensure customer satisfaction and provide professional customer support
- ★ Resolve customer complaints via phone, email, mail or social media.
- ★ Complies reports on overall customer satisfaction

FLOMEK SINGAPORE PRIVATE LIMITED



Head office : 66 Tannery Lane #01-05G Sindo Industrial Building Singapore (347805)
Factory: 9 Yishun industrial street 1, #04-64, Singapore 768163.

CONTACT US FOR MORE INFORMATION :

Call us : +65 9188 2150 | Mail : Sales@flomek.com | Web : www.flomek.com